



# Crystal MBF Series Filter Cartridges

## Melt Blown Filters

An economical, melt blown filter element that can be used in a wide range of applications. The Crystal MBF depth filter is constructed of 100% polypropylene media for chemical compatibility with a variety of process fluids. The unique Crystal Core prevents collapse even at elevated temperatures.

### Product Specifications

**Media:** Polypropylene

**End caps/Center Core:** Polypropylene

**Micron rating:**

1, 3, 5, 10, 20, 30, 50, 75 µm

### Dimensions

**Nominal lengths:**

9.75" 10" 20" 30" 40"  
24.8 25.4 50.8 76.2 101.6 cm  
*(Other lengths available)*

**Outside diameter:** 2.5" (6.35 cm),  
2.63" (6.7 cm) End capped

**Inside diameter:** 1.1" (2.79 cm)

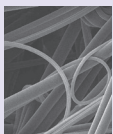
### Operating Parameters

**Maximum differential pressure:**

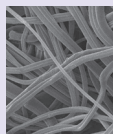
65 psid @ 68°F (4.5 bar @ 20°C)  
50 psid @ 100°F (3.4 bar @ 38°C)  
25 psid @ 170°F (1.7 bar @ 77°C)

**Recommended change-out pressure:**

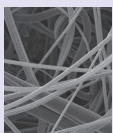
35 psid (2.4 bar)



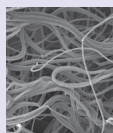
Outer prefilter zone



Inner prefilter zone



Final pre-filter zone



Final filtration zone

### FEATURES & BENEFITS

- Available in nominal ratings from 1 to 75 microns
- Formed Crystal Core for excellent collapse strength
- Graded pore construction for long on-stream life
- Melt blown media resists dirt unloading as differential pressure increases
- Non-shedding
- High dirt holding capacity
- Economical depth filtration
- Free of binders, adhesives and surfactants
- Highly consistent performance

### CERTIFICATIONS

- USP Class VI: Meets USP Class VI Biological Test for Plastics
- FDA Listed Materials: All materials comply with FDA Title 21 of the Code of Federal Regulations Sections 174.5, and 177.1520, as applicable for food and beverage contact.
- NSF 61: Certified to NSF/ANSI STD 61 for materials requirements only — Component
- European Directive for Direct Food Contact: European Regulation No. 1935/2004 and European Regulation 10/2011: Tested for migration behavior and is suitable for contact with all kinds of foodstuffs with minimal rinse-up. Data available upon request.

### TYPICAL APPLICATIONS

- RO Prefilters
- Wastewater
- Food and beverages
- Chemicals
- Blowdown post filter
- Radwaste
- Aqueous solutions
- Inks

